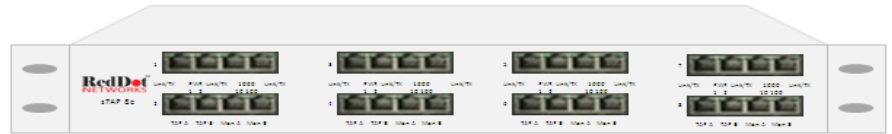


Benefits

- Provide 10/100/1000 Base-T Traffic Access Points in Networks & Data Centers
- Transparent to Application and Network Traffic
- Conserve valuable rack space
- Redundant power supplies
- Fail Safe Bypass

Features

- 8 x 10/100/1000 Base-T Passive Copper TAP
- 16 Monitor Ports
- 1U Enclosure
- Pass all application and network traffic including Layer 1 and Layer 2 errors
- Compatible with all monitoring tools and traffic access gateways
- Plug and Play – no IP address or configuration is required
- Combine 10/100/ 1000Base-T in the same 1U enclosure
- PoE Compliant

8x 10/100/1000 High Density Copper TAP with 16 Monitor Ports

RedDot Networks' high density Copper sTAP 8c standard Traffic Access Point combines 8 10/100/1000 Base-T TAPs with 16 monitor ports into a single 1U enclosure. The sTAP 8c's flexible design supports 10 Base-T, 100 Base-T or 1000 Base-T in the same 1U enclosure.

The sTAP 8c prevents downtime in your network and data center. By placing the sTAP 8c on critical network links, enterprises, service providers and governments ensure traffic monitoring (half or full duplex) and connectivity to monitoring tools (e.g. IDS, Application Performance Monitors and Protocol Analyzers) or Traffic Access Gateways without disrupting application or network traffic.

The sTAP 8c is transparent to application traffic and Ethernet switches. Since it supports 8 copper stations and 16 monitor ports in a 1U enclosure, it conserves valuable rack space. It comes standard with redundant power supplies to ensure high availability. No configuration is required, so the sTAP 8c can be inserted in a Plug and Play manner.

The Fail Safe Bypass feature guarantees 100% network connectivity and ZERO packet loss if power is lost to both power supplies. The feature is enabled by hardwiring Network Ports A and B when the sTAP 8c is not powered. Per port LEDs indicate Link and Network Activity and Link Speed. There are also LEDs for the redundant power supplies. Network traffic is not passed to the monitor ports if power is lost to both power supplies.

Unlike competitive solutions which require fans, which can fail causing the units to overheat, the sTAP 8c does not require fans due to its low power consumption.

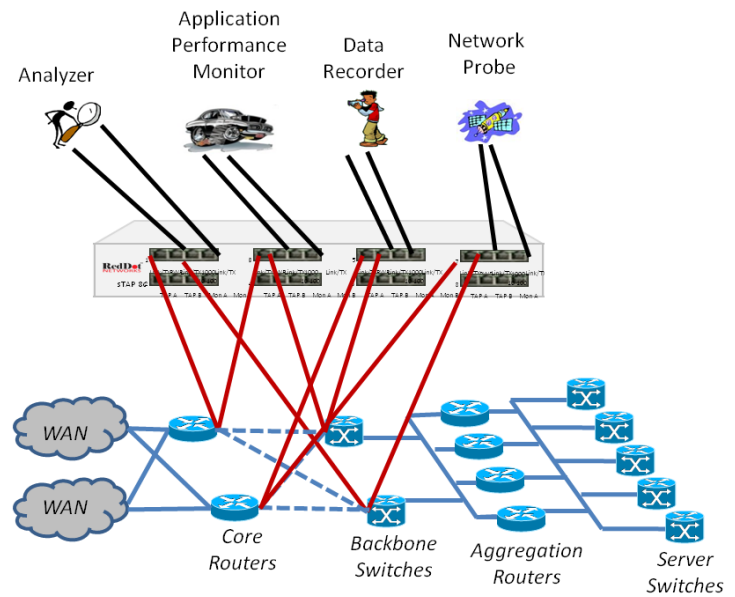
sTAP 8c standard Traffic Access Point

8 x 10/100/1000 Base-T High Density Copper TAP

Specifications

Interface Type	RJ-45, 8 pin modular connectors
Dimensions (H x W x D)	1.7" x 9.9" x 13.1", 4.32cm x 25.2cm x 33.27cm, 1U rack-mountable
Weight	4.85 lbs, 2.2kg
Operating Requirements	32° F to 131° F, 0° C to 55° C
Humidity	10% to 90%, non-condensing
Power	Redundant 90V-240V 50Hz – 60Hz 100W
Compliance	CE FCC Class A RoHS

sTAP 8c connected directly to Monitoring Tools



sTAP 8 connected directly to Traffic Access Gateway

