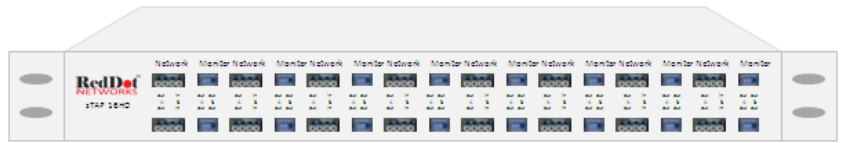


Benefits

- Provide 10G/1G Access Points in Networks & Data Centers
- Transparent to Application and Network Traffic
- Conserve valuable rack space
- Requires no power
- No point of failure

Features

- 16 x 10G/1G Passive Optical TAP
- 32 Monitor Ports
- 1U Enclosure
- Singlemode (9µm) or Multimode (50/62.5µm)
- Flexible Split Ratios: 50:50, 60:40, 70:30, 80:20 or 90:10
- Pass all application and network traffic including Layer 1 and Layer 2 errors
- Compatible with all monitoring tools and traffic access gateways
- Plug and Play – no IP address or configuration is required
- Combine 10G and 1G in the same 1U enclosure

16 x 10G/1G High Density Optical TAP with 32 Monitor Ports

RedDot Networks' high density Fiber sTAP 16f standard Traffic Access Point combines 16 optical TAPs with 32 monitor ports into a single 1U enclosure. The sTAP 16f's flexible design supports 10Gb/s or 1Gb/s Ethernet access in the same 1U enclosure.

The sTAP 16f prevents downtime in your network and data center. By placing the sTAP 16f on critical network links, enterprises, service providers and governments ensure traffic monitoring (half or full duplex) and connectivity to monitoring tools (e.g. IDS, Application Performance Monitors and Protocol Analyzers) or Traffic Access Gateways without disrupting application or network traffic.

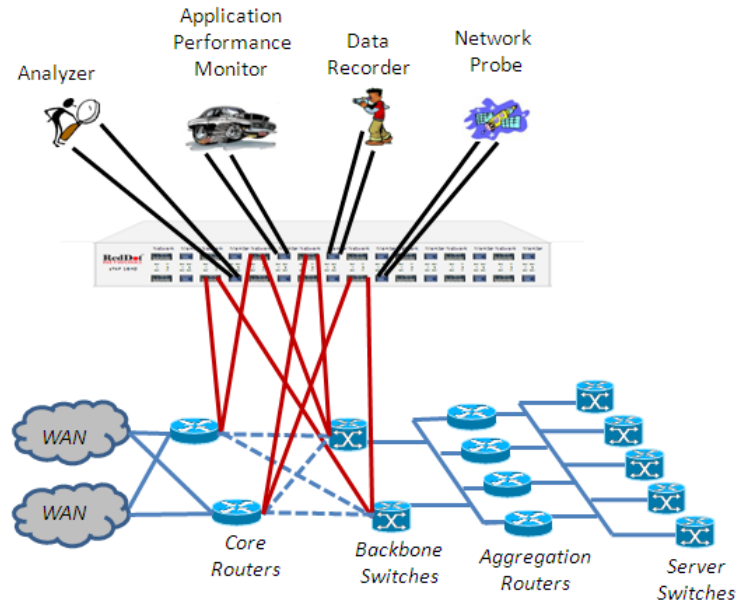
The sTAP 16f is transparent to application traffic and Ethernet switches. Since it supports 16 optical stations and 32 monitor ports in a 1U enclosure, it conserves valuable rack space. No power or configuration is required, so the sTAP 16f can be inserted in a Plug and Play manner.

The flexible optical power split ratios accommodate needs ranging from 50:50 split to a 90:10 split. Simply specify the desired split ration when placing your order. In order to accommodate different core fiber sizes the sTAP 16f supports 50µm as well as 62.5µm for multimode connections.

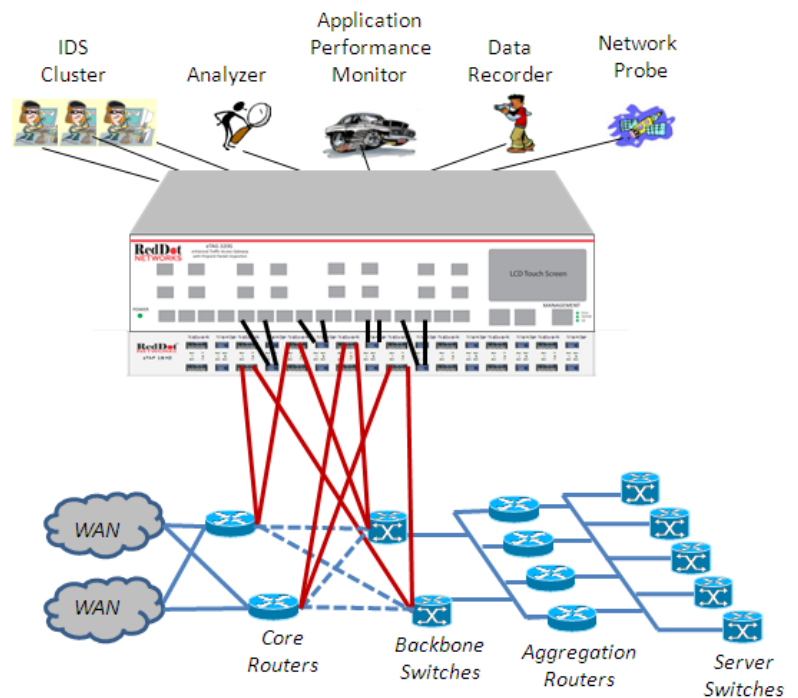
sTAP 16f standard Traffic Access Point

16 x 10G/1G Fiber High Density Optical TAP

sTAP connected directly to Monitoring Tools



sTAP connected directly to Traffic Access Gateway



Specifications

Interface Type	LC, Singlemode or Multimode
Dimensions (H x W x D)	1.7" x 15.3" x 13.1", 4.32cm x 38.86cm x 33.27cm, 1U rack-mountable
Weight	7 lbs, 3.2kg
Operating Requirements	32° F to 131° F, 0° C to 55° C
Humidity	5% to 90%, non-condensing
Split Ratios	50:50, 60:40, 70:30, 80:20 or 90:10
Multimode (50/62.5µm) Insertion Loss	4.4 dB, 4.4 dB @ 50:50 3.1 dB, 5.0 dB @ 60:40 2.4 dB, 6.3 dB @ 70:30 1.8 dB, 8.1 dB @ 80:20
Singlemode (9µm) Insertion Loss	3.7 dB, 3.7 dB @ 50:50 2.8 dB, 4.9 dB @ 60:40 2.0 dB, 6.1 dB @ 70:30 1.3 dB, 8.0 dB @ 80:20 0.8 dB, 12.0 dB @ 90:10

